

# TORQUEMETERS

The World's Best  
Torquemeters Since 1960



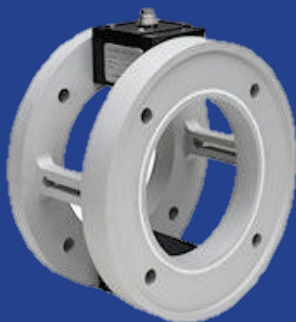
## S.HIMMELSTEIN & COMPANY

[www.himmelstein.com](http://www.himmelstein.com) 800-632-7873

Issue #38 2023

## Customer Installation Video

Many times, you've asked for images of real Himmelstein customer installations. We decided to provide you with this [video](#) so you can see both horizontal and vertical installations across several industries. Please let us know if you have any questions. We're here to help.



## C-Face Reaction Torque Transducers

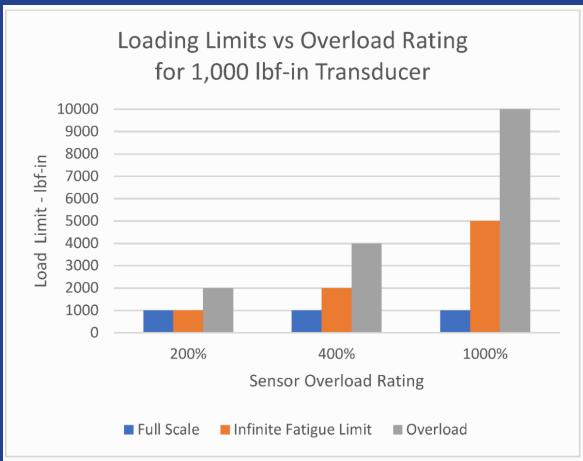
Series CF2800V Torquemeters replace Model CF2700V. They mate directly with NEMA C-Face motors and generators. Torque ranges from 5.65 to 2,260 Nm, digital and analog communications, and an overload rating of 500% make the CF2800V your optimal torque measurement device. [Learn more about the specifications!](#)

## Meet Autumn Brown

Meet our latest hire, Autumn Brown. Autumn joined us as a Return Authorizations Specialist on September 27, 2022.

We're grateful to have her on board as she has considerable office experience, is great with customers, and can assist with logistics as well.





## Exactly What is Overrange?

Here's an example: Say you have an application in which you will sometimes go to 12,000 lbf-in. Our ultra precise torque sensor with a torque rating of 10,000 lbf-in and 200% overload will not cover this need. Next size up is a 20,000 lbf-in. You don't need to measure that much! Our solution? The 10,000 lbf-in ultra-precise with an overload of 400%. This gives you infinite fatigue life to 25,000 lbf-in. Solution provided!



**S.HIMMELSTEIN**  
& COMPANY

*Designing and Making the Worlds Best Torque Instruments Since 1960*

**www.himmelstein.com** 800-632-7873  
Or contact us at [sales@himmelstein.com](mailto:sales@himmelstein.com)

Focused exclusively on torque sensors since 1960, [Himmelstein](http://www.himmelstein.com) designs and makes the world's best torque sensors, transfer standard, and instrumentation. Products include rotating and reaction sensors from 10 ozf-in to 22,000,000 lbf-in in virtually every mechanical configuration. All are calibrated CW and CCW to full capacity in our ISO/IEC17025:2017 accredited laboratory.

### Stay in Touch!



S. Himmelstein and Company | 2490 Pembroke Avenue, Hoffman Estates, IL 60169

[Unsubscribe cyndi@himmelstein.com](mailto:Unsubscribe_cyndi@himmelstein.com)

[Update Profile](#) | [Constant Contact Data Notice](#)

Sent by [himmelnews@himmelstein.com](mailto:himmelnews@himmelstein.com)